



VALVE

Paratech builds the reliability, we guarantee

PARATECH

VALVE



PARATECH UL/FM valves are designed to conform to the international standard with most compact and competitive size. The simple and light design products are also available for the customers who pursue the most reliable and economical fire sprinkler system.

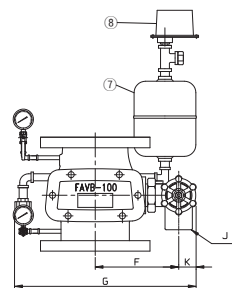
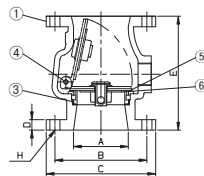
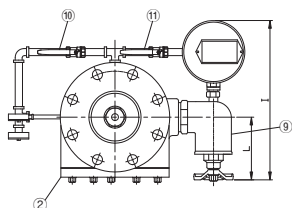
Alarm check Valve

■ Specification

Model No. FAVB Series	100R	100H	150R	150H	200R Flange	200R Grooved
Approved Standards	UL/FM	UL/FM	UL/FM	UL/FM	UL/FM	UL/FM
Max Pressure(PSI)	175	300	175	300	250	250
Test Pressure(PSI)	350	600	350	600	500	500
Direction	Vertical					
Flange/ Grooved Standard	ANSI B16.1 FF Class 150					ANSI/ AWWA
Weight(Kg)	38.6	46.4	56.2	70.6	76.5	57.6
Packing(Ea)	1	1	1	1	1	1

* Note: 100H & 150H UL Listing in progress

■ Assembly Diagram

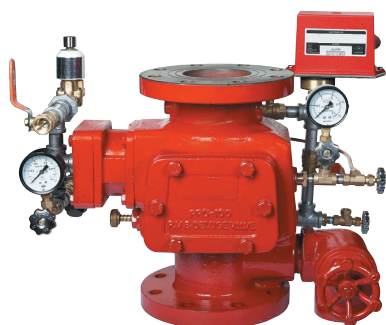


■ Dimension

Model No \ Size	A	B	C	D	E	F	G	H	I	J	K	L
FAVB 100R	100	175	210	24	250	169	415	8-19D	376	50A	50	153
FAVB 100H	100	200	254	32	266	169	415	8-22D	376	50A	50	153
FAVB 150R	150	240	280	26	280	199	480	8-23D	391	50A	50	153
FAVB 150H	150	270	318	37	301	199	480	12-22D	391	50A	50	153
FAVB 200R Flange	200	298	343	28.5	350	255	650	8-23D	500	50A	75	320
FAVB 200R Grooved	200	214	219	350	255	75	650	500	320	50A	-	-

■ Part List

NO	ITEM	MATERIAL	NO	ITEM	MATERIAL
1	Body	"Cast Iron (4", 6") Ductile Iron (4", 4"H, 6", 6"H, 8")"	7	Retarding Chamber	SPCC/SPPS
2	Cover	"Cast Iron (4", 6") Ductile Iron (4", 4"H, 6", 6"H, 8")"	8	Pressure Switch	-
3	Seat Ring	Bronze	9	Drain Valve	"Cast Iron/ Brass Ductile Iron/ Brass"
4	Disc & Arm	STS 304	10	Alarm Test Valve	Brass
5	Disc Seat	"Viton(4", 6") EPDM(4"H, 6"H, 8")"	11	Alarm Shut-off Valve	Brass
6	Seat Cover	STS 304	-	-	-



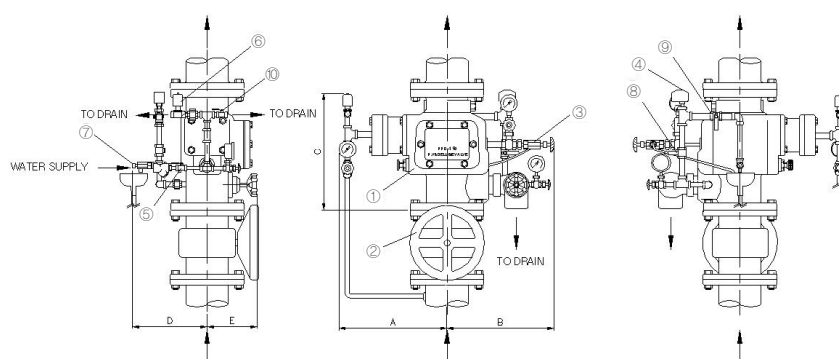
PPD100-UL/FM

Pre-Action & Deluge Valve

■ Specification

Model No	PPD100-UL/FM	PPD150-UL/FM
Size	100A	150A
Max. Pressure	175PSI	
Test Pressure	350PSI	
Pressure Loss	0.02MPa	
Direction	Vertical	
Flange Size	ANSI 150lb FF Type	
Weight(Kg)	59	79
Packing(Ea)	1	1

■ Assembly Diagram



■ Dimension

Model No \ Size	A	B	C	D	E
PPD100-UL/FM	243	260	367	270	150
PPD150-UL/FM	259	285	372	290	150

■ Part List

N0	Part	Material	N0	Part	Material
1	Body / Cover	Cast Iron	6	Solenoid Valve	-
2	OS&Y Valve	-	7	Drip Check Valve	-
3	Air Control Valve	-	8	PS Test Valve	-
4	Pressure Switch	-	9	PS Signal Control Valve	-
5	Water Supply Valve		10	Manual Valve	-

VALVE



Z1 Series_A



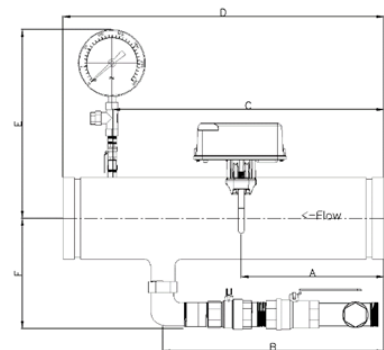
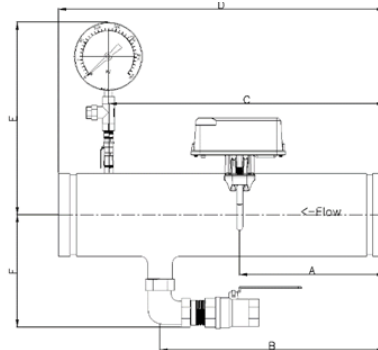
Z1 Series_B

Zone Control & Riser System – Z1 Series

■ Specification

Model No. Z1 Series		2" (50A)	2.5" (65A)	3" (80A)	4" (100A)	5" (125A)	6" (150A)	8" (200A)
Max Pressure(PSI)		300psi						
Test Pressure(PSI)		450psi						
Direction		Horizontal / vertical						
Connection		Grooved KS D 3562						
Weight (Kg)	Z1 Series_A	3.9	4.4	6.4	8.6	11.3	14.5	19.8
	Z1 Series_B	5.2	6.8	8.1	13.6	16.3	19.3	24.6

■ Assembly Diagram



■ Part List

NO.	ITEM	MATERIAL	NO.	ITEM	MATERIAL
1	Body	SPPS	3	Flow Switch	PP
2	Pressure Gauge	-	4	Drain valve	C3604

■ Dimension

Z1 series_A	A	B	C	D	E	F
Z1-50A	200	130	380	450	115	110
Z1-65A	200	140	380	450	120	110
Z1-80A	200	140	380	450	140	120
Z1-100A	200	190	380	450	160	140
140Z1-125A	200	190	380	450	160	140
Z1-150A	200	190	380	450	160	140
Z1-200A	200	190	380	450	160	140

Z1 series_B	A	B	C	D	E	F
Z1-50A	200	310	380	450	115	110
Z1-65A	200	310	380	450	120	110
Z1-80A	200	420	380	450	140	120
Z1-100A	200	420	380	450	160	140
Z1-125A	200	420	380	450	160	140
Z1-150A	200	420	380	450	160	140
Z1-200A	200	420	380	450	160	140

**FBVW(G)-300**

Wafer Resilient Butterfly Valve
Gear Operated, with Tamper Switch

**FBVG(G)-300**

Grooved Resilient Butterfly Valve
Gear Operated, with Tamper Switch

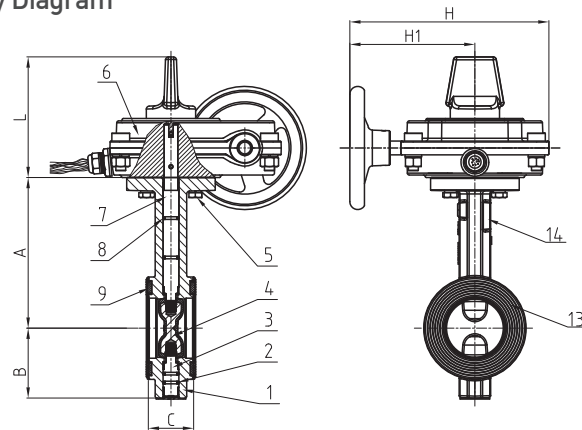
**FBVL(G)-300**

Lugged Wafer Resilient Butterfly
Valve Gear Operated, with Tamper
Switch

Butterfly Valve

- Valve Body: Ductile Iron ASTM A536, 65-45-12
- Disc: Ductile iron + EPDM Coating
- Stem: Stainless Steel, Two-Piece Stem Design
- Gear box: Ductile Iron ASTM A536, 65-45-12
- Epoxy Coating Color: RAL3000
- Pressure Rating: 300PSI

■ Assembly Diagram



■ Part List

NO	Part	MATERIAL	QTY
1	BODY	ASTM A536, 65-45-12	1
2	O-Ring	NBR	2
3	Stub Shaft	SS431	1
4	Disc	ASTM A536, 65-45-12+EPDM	1
5	Hex Nut	Carbon Steel Zinc plated	4
6	Signal Gearbox	Body: ASTM A536, 65-45-12	1
7	Drive Shaft	SS431	1
8	O-Ring	NBR	2
9	End Face Seal	EPDM	2

■ Dimension

Inch	mm	A	B	C	L	H1	H
2"	50	140.5	65	43±2	122.5	127	202.2
2.5"	65	153	71	46±2	122.5	127	202.2
3"	80	157.5	81	46±2	122.5	127	202.2
4"	100	176	95	52±2	122.5	127	202.2
5"	125	191	111	56±2	122.5	127	202.2
6"	150	202.5	133	56±2	122.5	127	202.2
8"	200	243.5	164	60±2	122.5	185	260.2
10"	250	273	196	68±2	122.5	185	260.2
12"	300	311	226	78±2	132	202.5	297.5

VALVE



FGVB(O)-300
Flange Type



FGVG(O)-300
Grooved Type

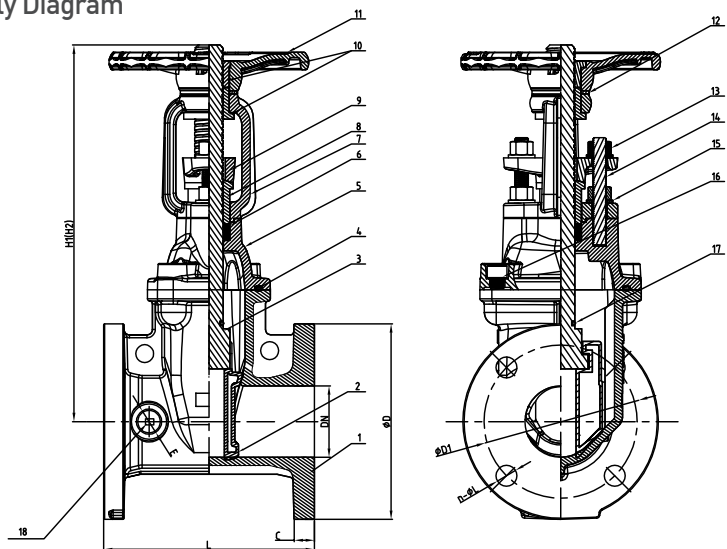


FGVM(O)-300
Flange x Grooved

Resilient OS&Y Gate Valve

- Valve Body: ASTM A536, 65-45-12
- Resilient Wedge Disc: ASTM A536, 65-45-12+EPDM
- O-Ring: NBR
- Stem: Stainless Steel
- Bonnet Gasket: EPDM
- Bonnet: ASTM A536, 65-45-12
- Yoke: ASTM A536, 65-45-12
- Gland: ASTM A536, 65-45-12
- Handwheel: ASTM A536, 65-45-12
- Epoxy Coating Color: RAL3000
- Pressure Rating: 300PSI

■ Assembly Diagram



■ Part List

NO	Part	MATERIAL
1	Valve Body	ASTM A536, 65-45-12
2	Resilient Wedge disc	ASTM A536, 65-45-12+EPDM
3	Stem	Stainless Steel 2Cr13
4	Bonnet Gasket	EPDM
5	Bonnet	ASTM A536, 65-45-12
6	Packing	EPDM
7	Yoke	ASTM A536, 65-45-12
8	Stem Bushing	Brass C22000
9	Gland	ASTM A536, 65-45-12
10	Stem nut	Brass C22000
11	Handwheel	ASTM A536, 65-45-12
12	Washer	C22000
13	Gland Nut	Carbon steel Zinc Plated
14	Stud	Carbon steel Zinc Plated
15	Flat Washer	Carbon steel Zinc Plated
16	Bolt	Carbon steel Zinc Plated
17	O-Ring	NBR
18	Plug	C89833

■ Dimension

DN		Dimensions(mm)							
Inch	mm	L	H1 (Close)	H2 (Open)	D	D1	C	n-ØL	
2"	50	178	348	400	152	120.7	18	4-Ø19.1	
2.5"	65	190	373	440	178	139.7	17.5	4-Ø19.1	
3"	80	208	408	490	191	162.4	19.1	4-Ø19.1	
4"	100	229	471	573	229	190.5	19.1	8-Ø19.1	
5"	125	254	541	565	254	215.9	19.1	8-Ø22.2	
6"	150	267	601	755	279	241.8	19.1	8-Ø22.2	
8"	200	292	774	975	343	298.5	22.2	8-Ø22.2	
10"	250	330	1029	1283	406	362	23.8	12-Ø25.4	
12"	300	356	1065	1370	483	431.8	25.4	12-Ø25.4	
14"	350	381	1210	1560	533	476.3	25.4	12-Ø28.6	
16"	400	406	1280	1680	597	539.8	25.4	12-Ø28.6	
18"	450	432	1760	2210	635	577.9	25.4	16-Ø31.8	
20"	500	457	1760	2280	609	635	28.6	20-Ø31.8	
24"	600	508	1950	2550	813	740.3	30.1	20-Ø34.9	



FGVB(N)-300
Flange Type



FGVG(N)-300
Grooved Type



FGVBP(N)-300
Flange Type With Post Flange

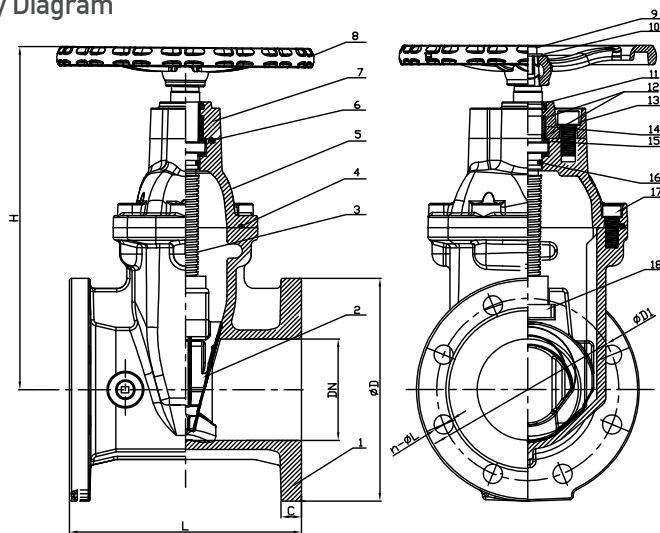


FGVGP(N)-300
Groove Type With Post Flange

Resilient NRS Gate Valve

- Valve Body: ASTM A536, 65-45-12
- Resilient Wedge Disc: ASTM A536, 65-45-12+EPDM
- O-Ring: NBR
- Stem: Stainless Steel
- Bonnet: ASTM A536, 65-45-12
- Gland: ASTM A536, 65-45-12
- Handwheel: ASTM A536, 65-45-12
- Bonnet Gasket: EPDM
- Epoxy Coating Color: RAL3000
- Pressure Rating: 300PSI

■ Assembly Diagram



■ Part List

NO	Part	MATERIAL
1	Valve Body	ASTM A536, 65-45-12
2	Resilient Wedge disc	ASTM A536, 65-45-12+EPDM
3	Stem	AISI 431
4	Bonnet Gasket	EPDM
5	Bonnet	ASTM A536, 65-45-12
6	O-Ring	NBR
7	Gland Flange	ASTM A536, 65-45-12
8	Handwheel	ASTM A536, 65-45-12
9	Bolt	Carbon steel Zinc Plated
10	Flat Washer	Carbon steel Zinc Plated
11	Ring Wiper	EPDM
12	O-Ring	NBR
13	Bolt	Carbon steel Zinc Plated
14	Axis guide	Brass HPb59-1
15	Washer	Brass HPb59-1
16	O-Ring	NBR
17	Bolt	Carbon steel Zinc Plated
18	Wedge nut	Brass HPb59-1

■ Dimension

DN	Dimensions(mm)						
	Inch	mm	L	H	D	D1	C
2"	50	178	254	152	120.7	16	4-Ø19.1
2.5"	65	190	275	178	139.7	17.5	4-Ø19.1
3"	80	208	301	191	152.4	19.1	4-Ø19.1
4"	100	229	355	229	190.5	19.1	8-Ø19.1
5"	125	254	393	254	215.9	19.1	8-Ø22.2
6"	150	267	448	279	241.3	19.1	8-Ø22.2
8"	200	292	548	343	298.5	22.2	8-Ø22.2
10"	250	330	626	406	362	23.8	12-Ø25.4
12"	300	356	722	483	431.8	25.4	12-Ø25.4
14"	350	381	917	533	476.3	25.4	12-Ø28.6
16"	400	406	917	597	539.8	25.4	12-Ø28.6
18"	450	432	1108	635	577.9	25.4	16-Ø31.8
20"	500	457	1130	699	635	28.6	20-Ø31.8
24"	600	508	1311	813	749.3	30.1	20-Ø34.9

VALVE



FCHB(S)-300
Flange Type



FCHBF(S)-300
Face-To-Face w/
ASME B16.10 CL125



FCHG(S)-300
Groove Type



FCHGD(S)-300
Big Drain Hole

Check Valve

- Valve Body: ASTM A536, 65-45-12
- Resilient Wedge Disc: ASTM A536, 65-45-12+EPDM
- O-Ring: NBR
- Stem: Stainless Steel
- Bonnet Gasket: EPDM
- Bonnet: ASTM A536, 65-45-12
- Yoke: ASTM A536, 65-45-12
- Gland: ASTM A536, 65-45-12
- Handwheel: ASTM A536, 65-45-12
- Epoxy Coating Color: RAL3000
- Pressure Rating: 300PSI

■ Dimension

DN		PN (PSI)	Dimension(mm)					
Inch	mm		L	D	D1	b	n-d	H
2"	50	300	203	152	120.5	16	4-Ø19.1	133
2 1/2"	65	300	254	178	139.5	17.5	4-Ø19.1	150
3"	80	300	278	191	152.5	19	4-Ø19.1	160
4"	100	300	330	229	190.5	24	8-Ø19.1	218
6"	150	300	406	279	241.5	25.5	8-Ø22-2	290
8"	200	300	495	343	298.5	28.5	8-Ø22-2	330
10"	250	300	622	406	362	30.5	12-Ø25.4	350
12"	300	300	660	483	432	32	12-Ø25.4	376



FSYB-300
Flange Type

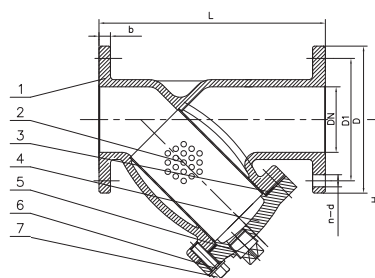


FSYG-300
Groove Type

Strainer

- Valve Body: Ductile Iron ASTM A536, 65-45-12
- Screen: AISI 304
- Rigid Coupling: Ductile Iron ASTM A536, 65-45-12
- Cap: Ductile Iron ASTM A536, 65-45-12
- Plug: Malleable Iron Galvanized
- Epoxy Coating Color: RAL3000/EY3009M
- Pressure Rating: 300PSI

■ Assembly Diagram



■ Part List

NO	Part	MATERIAL
1	Valve Body	ASTM A536, 65-45-12
2	Screen	SIAI 304
3	Gasket	EPDM
4	Cover	ASTM A536, 65-45-12
5	Plug	Malleable iron galvanized
6	Bolt	Carbon steel Zinc Plated
7	Flat Washer	Carbon steel Zinc Plated



FBVT(G)-175
Vertical Indicator
Post used for
Gate Valve with
Post Flange



FIPW
Indicator Port

Indicator Post

- Body: Cast Iron ASTM A126 Class B
- Base Flange: Cast Iron ASTM A126 Class B
- Standpipe: Carbon Steel ASTM A53
- Window Class: Plexiglass
- Locking Wrench: ASTM A536, 65-45-12
- Epoxy Coating Color: RAL3000
- Pressure Rating: 300PSI

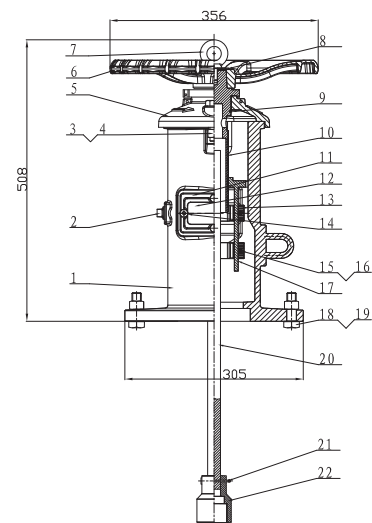
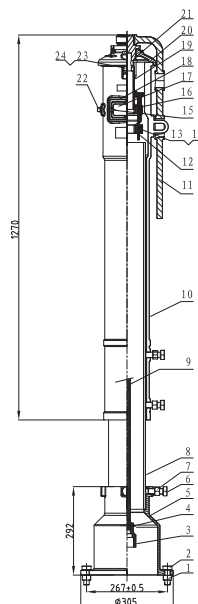
■ FBVT(G)-175 Part List

NO	Component	Material
1	Hex Nut	Carbon Steel Zinc Plated
2	Hex Bolt	Carbon Steel Zinc Plated
3	Socket	ASTM A536, 65-45-12
4	Cotter Pin	AISI 304
5	Base Flange	Cast Iron ASTM A126 Class B
6	Hex Bolt	Carbon Steel Zinc Plated
7	Hex Nut	Carbon Steel Zinc Plated
8	Standpipe	Carbon Steel ASTM A53
9	Stem 1 Square	Carbon Steel AISI 1045
10	Body	Cast Iron ASTM A126 Class B
11	Locking Wrench	ASTM A536, 65-45-12
12	Target Carrier Nut	AISI 304
13	Hex Bolt	Carbon Steel Zinc Plated
14	Hex Nut	Carbon Steel Zinc Plated
15	Hex Bolt	Carbon Steel Zinc Plated
16	Instructs the plane	Cast Aluminium
17	Window Class	Plexiglass
18	Gasket	PTFE
19	Operating NUT	AISI 304
20	Top Section	Cast Iron ASTM A126 Class B
21	Snap Ring	Stainless Steel AISI 1066
22	Plug	Malleable iron Galvanized
23	Square Nut	Carbon Steel Zinc Plated
24	Hex Bolt	Carbon Steel Zinc Plated

■ FIPW Part List

NO	Component	Material
1	Body	Cast Iron ASTM A126 Class B
2	Plug	Malleable iron Galvanized
3	Square Nut	Carbon Steel Zinc Plated
4	Hex Bolt	Carbon Steel Zinc Plated
5	Cover	Cast Iron ASTM A126 Class B
6	Hand wheel	ASTM A536, 65-45-12
7	Eye Bolt	Carbon Steel ASTM A307B
8	Washer	Carbon Steel ASTM A307B
9	Snap Ring	Stainless Steel AISI 1066
10	Operating NUT	AISI 304
11	Gasket	PTFE
12	Window Class	Plexiglass
13	Instructs the plane	Cast Aluminium
14	Hex Bolt	Carbon Steel Zinc Plated
15	Hex Bolt	Carbon Steel Zinc Plated
16	Hex Nut	Carbon Steel Zinc Plated
17	Target Carrier Nut	AISI 304
18	Hex Nut	Carbon Steel Zinc Plated
19	Hex Bolt	Carbon Steel Zinc Plated
20	Stem 1 Square	Carbon Steel AISI 1045
21	Cotter Pin	AISI 304
22	Socket	ASTM A536, 65-45-12

■ Assembly Diagram



Cautions

1. Insulate the valves and accessories to prevent freezing damage in the cold winter.
2. Clean up inside of valves and accessories after installation to prevent the sprinkler system damage.
3. Install the proper pipe with specified diameter for secondary side.
4. Drain water in the pipe of secondary side before opening the valve cover for repair or clean up.
5. Follow the manual for electrical wiring.

VALVE



PH0A-15



PH0A-25

Sight Glass

■ Specification

Model No	PH0A-15	PH0A-25
Size	15A	25A
K Value (Reference 0.1MPa)	K=80	K=80
Direction	Vertical or Horizontal	Vertical or Horizontal
Weight(g)	390	360
Valve Size	Alarm Valve 65A-150A	Alarm Valve 65A-150A
Screw Size	Inlet : PT½ " / Outlet : PT½ "	Inlet : PT1 " / Outlet : PT ½ "
Surface finishing	Red Painting	Red Painting
Length	106mm	75mm

Water Motor Gong

■ Part List



No	Part	Material	No	Part	Material	No	Part	Material
1	Upper cover	AL.	7	Connector pipe	Zinc plated steel	13	Frame	AL.
2	Screw	Carbonize steel	8	Screw	Brass	14	Plug	Carbonize steel
3	Seal gasket	Mild sheet	9	Impeller jacket	AL.	15	Spring gasket ring	Carbonize steel
4	Impeller	Nylon	10	Wheel	Polyester	16	Body	AL.
5	Axes jacket	Nylon	11	Rotate axes	Nylon	17	Install board	Carbonize steel
6	Axes	AL.	12	Screw	Carbonize steel	-	-	-

• Working Pressure : 1.2MPa

CERTIFICATE OF COMPLIANCE	
Certificate Number	2017111-EX27664
Report Reference	EX27664-201711107
Issue Date	2017 November 13
Issued to:	PARATECH CO LTD 36-31, DO-ILJID 42MBONG-DO, WOMON-GU, BUCHEON-SI, GYEONGGI-DO 420-858 REPUBLIC OF KOREA
This is to certify that representative samples of	Butterfly Valves FRBWQ-300, FRBWQ-250, FRBWQ-200, FRBWQ-175, FRBWQ-150, FRBWQ-125, FRBWQ-100, FRBWQ-75, FRBWQ-50, FRBWQ-40, FRBWQ-30, FRBWQ-25, FRBWQ-20, FRBWQ-15, FRBWQ-10, FRBWQ-7.5
Have been investigated by UL in accordance with the Standard(s) indicated by the UL Certificate	UL 1091 - Standard for Butterfly Valves for Fire Protection UL 581 - Standard for Manual Signaling Boxes for Fire Alarm Systems UL 753 - Standard for Alarm Accessories for Automatic Water-Supply Control Valves for Fire Protection See the UL Online Certifications Directory at www.ul.com/certificates for additional information
Additional information:	UL Classifications for the UL Certificate Mark will be considered as being covered by UL's Certification and Follow-Up Service.
This form represents bearing the UL Certification Mark on the product.	
<div> _____ Name of Representative (Print Name) _____ Title of Representative (Print Name) _____ Company Name (Print Name) _____ Address (Print Name) _____ City (Print Name) State (Print Name) Zip (Print Name) _____ Country (Print Name)</div> <div></div>	

<h1 style="text-align: center;">CERTIFICATE OF COMPLIANCE</h1>	
Certificate Number: Report Reference: Issue Date:	20171119-8327861 EKX261-2017-1107 2017 NOVEMBER-13
Issued to:	PARACHITE CO LTD 36 21 OILJUNG ABBEONG-DO WONGBU-GU BUCHON-SI, GYONGGI-DO 420-886 REPUBLIC OF KOREA
This is to certify that representative samples of:	Strainers, Pipeline Strainers, Y type, FSYB, FSYG-300, FSYG-250, FSYG-200
	Have been investigated by UL in accordance with the Standards indicated on the Certificate.
Standard(s) for Safety:	Subject 217-Outline of Investigation for Pipeline Strainers; UL3000-CIS-10 Pipeline Strainers
Additional Information:	See the UL Online Certifications Directory at www.ul.com/certification for additional information.
<p>Only those products bearing the UL Certification Mark should be considered as being covered by the U.L. Certification and FSYG-300, FSYG-250, FSYG-200.</p> <p>Look for the UL Certification Mark on the product.</p>	
<div style="display: flex; justify-content: space-between; align-items: center;"> <div style="text-align: center;">  <p>_____ UL <small>Underwriters Laboratories Inc.</small></p> </div> <div style="text-align: center;"> <p>_____ <small>Authorized Representative of the Issuing Entity</small></p> </div> <div style="text-align: center;">  </div> </div>	

[illegible][illegible]

PARATECH

FESCO
FIRE EQUIPMENT & SERVICE COMPANY